

# WebEasy GIS

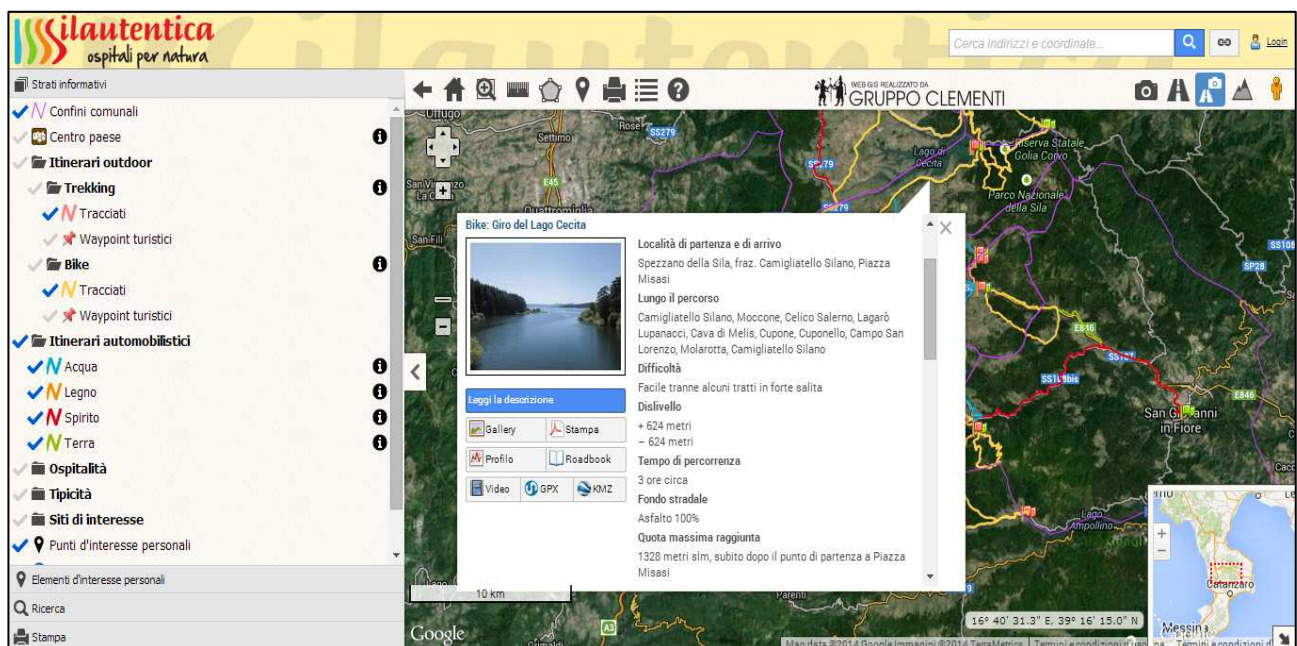
## Geographic Information System

**WebEasy GIS** is a cloud computing application for the web consultation of maps and geographic data.

WebEasy GIS has a practical and intuitive interface, it works simply with internet browser and it allows to view on the web any type of spatial data and to get all the information associated with one-click.

It is able to display quickly complex maps on custom bases and it requires the least amount of resources possible.

WebEasy GIS is compatible with the latest versions of the most popular browsers, any operating system and it doesn't need any external plugins.



## *The interactive map*

WebEasy GIS works in similar way of Google Maps™: you can drag with the mouse, you can increase/decreases zoom through the scroll wheel and you can obtain information about a point with a click.

Informations are displayed into clouds, in which data can be organized according to the specific need, adding photos, movies, files to download, etc.

Tools of interaction allow to insert points of interest, to measure distances and areas, to print, to retrace their steps with navigation history and to explore the surrounding area with **Google Streetview™**.

WebEasy GIS makes available to the user the Google basic **cartographic bases**: satellite, road, digital terrain model and hybrid.

It's possible to configure WebEasy GIS to provide custom bases such as orthophotos or technical , topographical and photogrammetric papers.

## *Information layers*

Sources of geometric data and informations extracted through queries can be normal **ESRI Shape Files** or geographic database like **PostGIS**.

Layers (i.e., geographic data) are listed in a tree-scheme directory, they can be overlapped on the selected base and be activated with a click.



## Personal Points of Interest

WebEasy GIS allows to organize customized points, defining name and symbol, choosing from defaults with the possibility of customizing.

It's possible to export to **GPX** format, which is compatible with most popular softwares (Google Earth™, QGIS, ...) and satellite navigators.

## Research and query

Using the geocoding service provided by Google, the search module allows to find locations, addresses and coordinates. Points are added on the map and can be retrieved with a click. Through a special control they can be added to personal points list.

Through modules which can be defined according to the own need, WebEasy GIS permit to query geographic data databases and to obtain any type of information and analysis.

## Printing

It is possible to obtain the current view of the map with the overlay of spatial data, either as PDF as common image format.

Options allow to adjust sheet size, scale ratio, margins, title and legend. It also allows to customize the print by inserting **own logo**.

## Restricted Access

The screenshot displays the WebEasy GIS interface. At the top, there is a banner with the text "Dalla pianura al lago Attraverso la rete natura 2000 e". Below the banner is a navigation toolbar with icons for home, zoom, and other map functions. The main content area is divided into several sections:

- Stampa (Print):** A dialog box for printing the current map view. It includes options for "Documento PDF", "Dimensioni" (A4 210x297 mm), "Margine" (5), "Scala" (automatica 1 foglio), "Legenda" (no), and "Titolo". There are also options for "Orientam." (automatico, verticale, orizzont.) and a "Scarica" button.
- Punti d'interesse personali:** A table listing personal points of interest. The table has columns for "Nome", "Lon.", and "Lat.". The data is as follows:

Nome	Lon.	Lat.
Segnaposto 1	9.33718	45.73811
Segnaposto 2	9.32345	45.73080
Segnaposto 3	9.36173	45.73547
Segnaposto 4	9.31881	45.72181
- Ricerca (Search):** A search input field.
- Stampa (Print):** A second dialog box for printing, similar to the first one, but with a "Scarica" button.
- Autenticazione (Authentication):** A login form with fields for "Nome Utente" and "Password", an "Accedi" button, and a link for "accedi come ospite".
- Map:** A topographic map showing terrain contours, roads, and buildings. A red dashed box highlights a specific area on the map.

WebEasy GIS allows to restrict the view of certain geographic data to a small number of users.

Through an intuitive configuration panel it's possible to manage users and their permissions.

Connecting to a PostGIS database, WebEasy GIS also allows to **store** points of interest to make them available to public or other system users.

### *Why WebEasy GIS?*

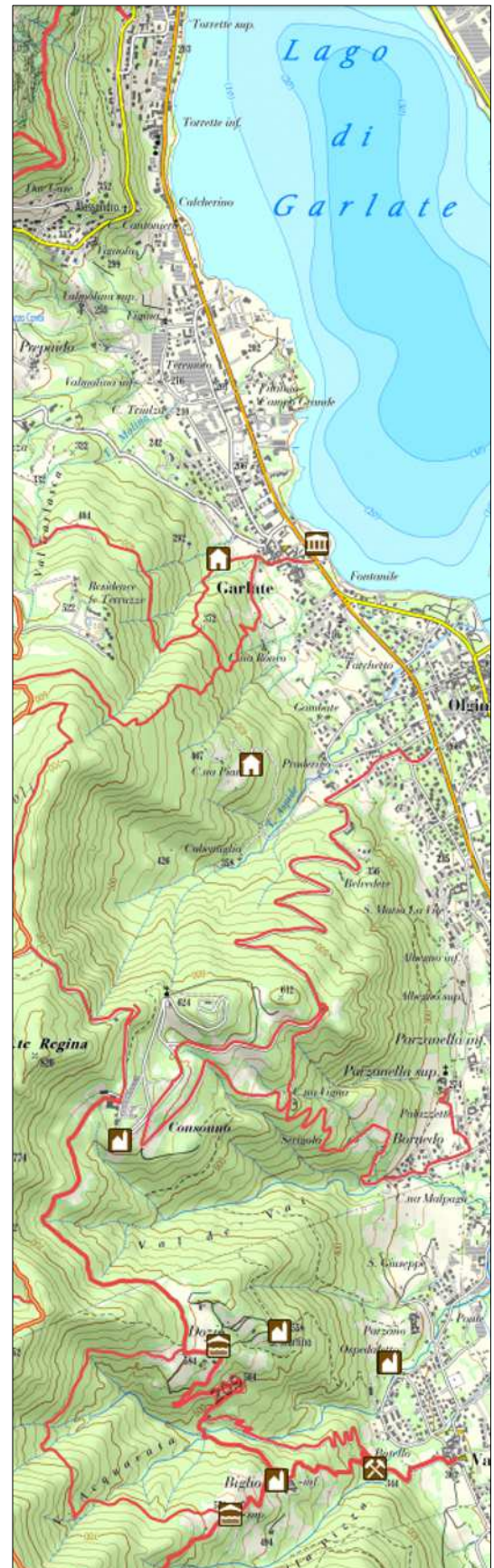
- It requires a small capacity server and it doesn't require expensive software licenses, ensuring small operating costs.
- It's very simple and intuitive and it doesn't need an user manual (although there is one available online).
- It isn't based on common webgis solutions on the web market, it is easily adaptable and able to fulfill any needs.
- It provides printing results comparable to best GIS tools keeping its easy-using.

### *Technical Specifications*

#### **Server**

For operating WebEasy GIS needs to rely on a server machine, which must have the following minimum requirements:

- CPU 1,6 GHz
- 1GB of RAM memory



- 10 GB of free space on the disk
- Operating system Linux Debian 6

The minimum characteristics may vary in relation to the amount of data to be published and the number of users of the system.

### **Client**

WebEasy GIS doesn't need third-part plugins and it is compatible with any operating system that is able to operate one of the following browsers:

- Mozilla Firefox
- Google Chrome
- Apple Safari
- Microsoft Internet Explorer 8+

For Internet Explorer is recommended version 9 or later.

---

**Marco Bortolin**  
www.marcobortolin.it  
info@arcobortolin.it

**www.weeasygis.it**

**Giorgio Meroni**  
www.gpsbrianza.com  
gpsbrianza@gmail.com